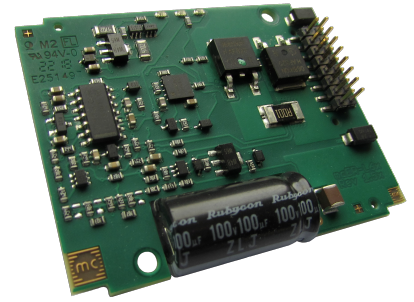


Brake chopper mcER-L60-60-Modul

Article number: 1511533



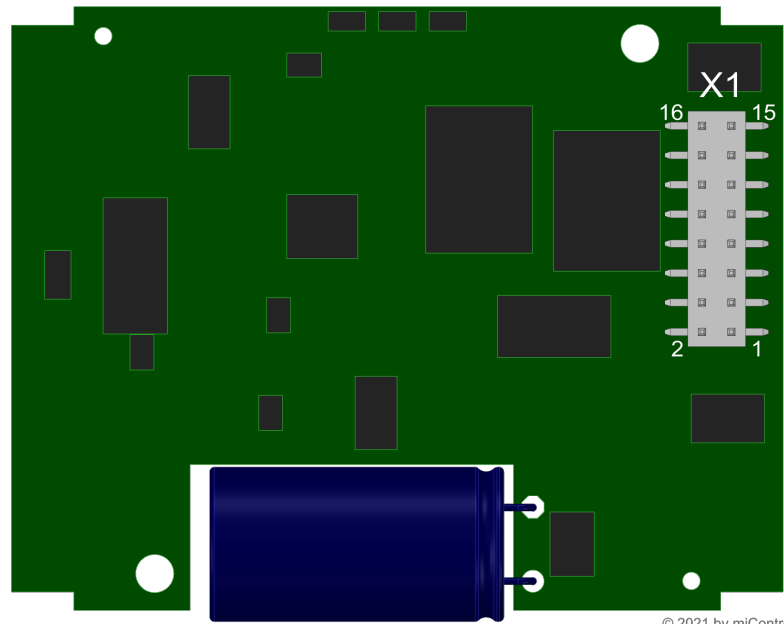
Picture similar

Technical data

Absolute maximum rating	
Voltage (destruction limit) no polarity reversal protection	100 V
Power	
Electronic supply voltage U_p	18..60 V
Electronic current consumption	typ. 10 mA
Braking peak current @ $U_{Br}=60V$	60 A
Max. braking continuous current @ $T_a=40^\circ C$	5 A
Braking resistor	
Braking voltage U_{Br}	60 V
Braking resistor @ $U_{Br}=30V$	min. 1 Ohm (external)
Maximum duty cycle	100 %
Integrated electrolytic capacitors	100 uF
Mechanical	
Size LxWxH	52.5 x 41 x 10.5 mm
Weight	14 g
Environment	
Protection class	IP00
Ambient temperature (operation)	-40..70 °C
Ambient temperature (storage)	-40..85 °C
Rel. humidity (non-condensing)	5..90 %
Error recognition	
Short circuit braking resistor	yes
Braking resistor is missing / defective	yes
Overtemperature electronic	yes
Overtemperature braking resistor	no

Digital output	
Number	1 (/Error)
Continuous output current	typ. 10 mA
Load	resistive
Output voltage	Up (24V max.)
Signal type	positive switching

Scheme



© 2021 by miControl

Terminal assignment

X1	Supply	
1	GND	Ground for power supply voltage
2	GND	Ground for power supply voltage
3	GND	Ground for power supply voltage
4	GND	Ground for power supply voltage
5	+Up	Power supply voltage
6	GND	Ground for power supply voltage
7	+Up	Power supply voltage
8	+Up	Power supply voltage
9	+Up	Power supply voltage
10	+Up	Power supply voltage
11	/Error	Error output
12	Rd	Braking resistor
13	Rd	Braking resistor
14	Rd	Braking resistor
15	Rd	Braking resistor
16	Rd	Braking resistor