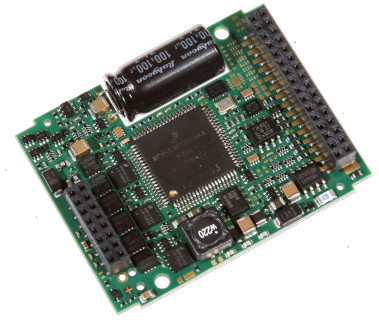


Servo amplifier

mcDSA-E60-Modul

Article number: 1512700

 Certification:  *1
E475093


Picture similar

Technical data

Absolute maximum rating (destruction limits)	
Power supply voltage Up no polarity reversal protection	80 V
Continuous Electronic supply voltage Ue no polarity reversal protection	33 V
Short term peak voltage < 1s Ue no polarity reversal protection	37 V
Power	
Electronic supply voltage Ue	9..30 V
Electronic current consumption@ Ue=24V*2	typ. 25 mA
Power supply voltage Up	9..60 V
Max. output current	15 A
Continuous output current (certified UL)*3 @Up=24V	5 A
@Up=60V	4.3 A
PWM	
Output voltage	90% Up
PWM frequency	25, 32*4, 50 kHz
Mechanical	
Size LxWxH	52.5 x 41 x 11 mm
Weight	18 g
Environment	
Protection class	IP00
Ambient temperature (operation) (certified UL)	-40..40 °C
Ambient temperature (operation) (not certified)	-40..70 °C
Ambient temperature (storage)	-40..85 °C
Rel. humidity (non-condensing)	5..90 %
CAN bus	
Protocol	DS301
Device profile	DS402
Max. baudrate	1 Mbit/s
CAN specification	2.0B
Galvanically isolated	no

Sensor supply (Encoder/Hall)	
Output voltage	5 V
Max. output current	0.2 A
Incremental encoder	
Type	incremental
Signals	A,B,Inx
Max. frequency (per channel)	100 kHz
Input voltage	0..5 V
Signal type	open collector, single ended
Hall sensors	
Signals	H1,H2,H3
Max. frequency (per channel)	10 kHz
Input voltage	0..5 V
Signal type	open collector, single ended
Digital inputs	
Number - digital inputs	4 (Din0..3)
Low voltage	0..5 V
High voltage	8..30 V
Digital outputs	
Number	1 (Dout0)
Continuous output current (certified UL)	1.5 A
Load	resistive, inductive
Output voltage	Electronic supply voltage Ue
Signal type	positive switching
Analog inputs	
Number	2 (Ain0..1)
Signal type - Ain	0..10 V, 12 Bit, single ended

*1 The certified performance data must be observed (see UL Instruction Note)

*2 power amplifier switched off, 5V output (sensor supply) is free

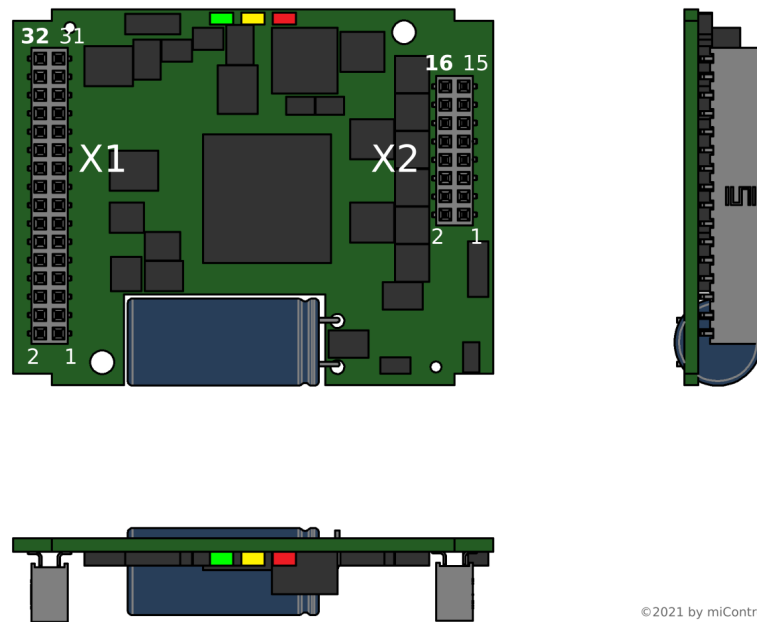
*3 connector cable with max. possible cable cross-section, PWM frequency 32 kHz (asymmetrical), ambient temperature 40 °C, I/O's and 5V output active, RMS current: 5 A → 4.1 Aeff, 4.3 A → 3.5 Aeff

*4 default value

Additional technical data are available in mcManual.



Scheme



©2021 by miControl

Terminal assignment

X1	Hall, inc. encoder, I/O's and CAN	
1	Inx	Inc. encoder, index channel
2	/Id7	Node-ID Bit 7 inverted
3	+U5V	5V output voltage for sensor supply Sensors: encoder, hall
4	/Id6	Node-ID Bit 6 inverted
5	B	Inc. encoder, B channel
6	/Id5	Node-ID Bit 5 inverted
7	A	Inc. encoder, A channel
8	/Id4	Node-ID Bit 4 inverted
9	H3	Hall sensor 3
10	/Id3	Node-ID Bit 3 inverted
11	H2	Hall sensor 2
12	/Id2	Node-ID Bit 2 inverted
13	H1	Hall sensor 1
14	/Id1	Node-ID Bit 1 inverted
15	CAN Lo	CAN Low
16	/Id0	Node-ID Bit 0 inverted
17	CAN Hi	CAN High
18	Erw2	mcSPI expansion signal 2
19	Dout0	Digital output 0
20	Erw1	mcSPI expansion signal 1
21	Din2	Digital input 2
22	SpiCLK	mcSPI Clock
23	Din1	Digital input 1
24	SpiMOSI	mcSPI Master Out Slave In
25	Din0	Digital input 0
26	Spi/SS	mcSPI Slave Select
27	Ain0	Analog input 0
28	SpiMISO	mcSPI Master In Slave Out
29	Ain1	Analog input 1
30	Din3	Digital input 3
31	GND	Ground for sensor supply Notice: don't connect with system GND
32	res.	Reserved

X2	Motor	
1	+Up	Power supply voltage
2	res.	Reserved
3	+Up	Power supply voltage
4	res.	Reserved
5	GND	Ground for power and electronic supply voltage
6	GND	Ground for power and electronic supply voltage
7	Ma	Motor phase A
8	+Ue	Electronic supply voltage
9	Ma	Motor phase A
10	+Ue	Electronic supply voltage
11	Mb	Motor phase B
12	Mb	Motor phase B
13	Mc	Motor phase C
14	res.	Reserved
15	Mc	Motor phase C
16	res.	Reserved